



# ADVENTURE 2022

## ACCESSORIES CATALOGUE



# MAKE YOUR HONDA TRULY YOURS

What is better than Honda Genuine Accessories to make your Honda truly yours? For extra luggage capacity, improved comfort, rugged protections, extended performance or just an even better looking bike, we have everything covered. Built with the same attention to details than your Honda, supported by a 2-year warranty our accessories will suit perfectly your bike and add to its value. Ask your local Honda Dealer. He knows how to make your Honda Adventure Bike truly yours.



# CONTENTS



AFRICA TWIN ADVENTURE SPORTS	04
CRF1100L AFRICA TWIN	16
X-ADV 750	30
CB500X	36
CRF300L / RALLY	44







# ACCESSORIES

## CRF1100L AFRICA TWIN



## ADVENTURE SPORTS

### DID YOU KNOW?

*Honda NXR 750 Paris-Dakar*

*The NXR750 dominated the Paris-Dakar Rally from 1986 to 1989, winning the trophy 4 years in a row. Back then the 22 day race started in Paris and ended in Dakar/Senegal crossing nearly 15.000km of african desert. Gilles Lalay won the 1989 Paris-Dakar Rally on this motorcycle with its distinct Rothmans design.*







693 €

#### **42L ALUMINIUM TOP BOX KIT** **08ESY-MKS-LGALU**

Made of strong and light aluminium, this 42L top box can store one full face helmet and much more. It comes with a backrest and the 1-key Honda system.

It can be installed directly onto the rear carrier of the Africa Twin Adventure Sports.

Maximum load weight: 6 kgs





617 €

### 58-LITER PLASTIC TOP BOX WITH BACK REST AND BASE

#### 08ESY-MKS-LGPL

With a large capacity of 58 litres, this plastic top box can store two full-face helmets and much more.

A special lock secures the lid without using the key. It comes with a Backrest, a 1-key system and the base to fit directly the standard rear carrier of Adventure Sports. Maximum load weight: 6 kgs

Exist also with specific Africa Twin design (see Design section on page 10).



524 €

### EASY 35L TOP BOX PACK

#### 08ESY-MKS-LG35

35L Top Box suitable for one helmet. The Honda one key system allows to operate the top box by using the ignition key. Top box base, key system and backrest are included.



138 € / 71 €

### INNER BAGS FOR PLASTIC LUGGAGE

#### 08L81-MKS-E00

Inner Bag specifically designed to fit the 58L Plastic Top Box. As it is waterproof and equipped with straps, it can be also attached directly onto the motorcycle. Finally, a shoulder strap makes it easy to carry.

#### 08L83-MKS-E00

Inner bag specifically designed to fit the right or the left plastic pannier. Same specifications as the plastic top box inner bag.

## LUGGAGE



1 469 €

### ALUMINIUM PANNIERS SET

#### 08ESY-MKS-PNALU

Made of strong and light aluminium, this set includes 2 panniers presenting a capacity of 33 L on the right side and 37 L on the left.

An aluminium stay and a set of 1-key Honda systems are included to fit directly the rear carrier of the Africa Twin Adventure Sports.

Maximum load weight for each pannier: 10 kgs



1 153 €

### PLASTIC PANNIERS SET

#### 08L71-MKS-E00

Specifically designed for a stay-less installation, this set of 2 panniers are suitable for adventure touring thanks to their highly durable shell. On the right side, the pannier presents a capacity of 30 litres. With 40 litres on the left side, it's possible to store one full-face helmet. Both panniers are equipped with a security lock and the Honda 1-Key system.

Exist also with specific Africa Twin design (see Design on page 10)

Maximum load capacity per panniers: 6 kg



58 € / 92 €

### INNER BAGS FOR ALUMINIUM LUGGAGE

#### 08L82-MKS-E00

Inner Bag specifically designed to fit the Aluminium Top Box. As it is waterproof and equipped with straps, it can be also attached directly onto the motorcycle. Finally, a shoulder strap makes it easy to carry.

#### 08L84-MKS-E00

Set of 2 inner bags specifically designed to fit the right and the left aluminium panniers. Same specifications as the top box inner bags.





66 €

### INNER BAG FOR 35-L TOP BOX

**08L75-MJP-G51**

Black nylon bag with embroidered silver Honda wing logo on the top and red zippers. Comes with adjustable shoulder belt and carrying handle.



136 €

### 4.5-LITER TANK BAG

**08L85-MKS-E00**

Thanks to its transparent pocket, this waterproof Tank Bag is the perfect solution to store a smartphone and connect it to the USB port of the motorcycle (depending on smartphones specifications / connectors not included). A one-touch buckle and a magnet keep this Tank Bag firmly attached to the bike.

- Capacity: 4,5 Liters
- Maximum load weight: 1.5 kg



97 €

### 3-LITER TANK BAG

**08L89-MKS-E00**

This light and compact Tank Bag features a transparent pocket and it's ideal to store small personal items. Unnoticeable while steering the bike, this Tank Bag is firmly attached thanks to a one-touch buckle and a magnet. A rain cover is included.

- Capacity: 3 Liters
- Maximum load weight: 1.5 kg

## LUGGAGE







493 €

### FRONT LED FOG LIGHTS KIT

**08ESY-MKS-FL20**

Set of 2 additional LED headlights (11W) with all necessary components for fitment to the front side pipe (not included). Increase the visibility for the riders and make them more noticeable for the surrounding traffic. Operated directly with the handlebar switch and signalled on the TFT monitor when activated.



55 €

### VISORS SET

**08R73-MKS-E20**

Specially designed for Adventure Sport models, these visors improve the comfort by reducing the travelling air around the rider's arms and shoulders. CRF logo branded.



52 €

### DEFLECTORS SET

**08R71-MKS-E20**

The deflector improves comfort by reducing traveling air around the rider's waist and knees while controlling travelling air emitted by the radiator.

## COMFORT



168 €

### LOW SEATS

**08R73-MKS-E00ZA, E00ZB or E00ZC**

The Low Seats reduce the seat height by 25mm. Depending on the position selected, the result is a seat height of 825 or 845mm.

Seats are colour matching with the unit:

- Red versions (E00ZA)
- Tricolour versions (E00ZB)
- Black versions (E00ZC)



235 €

### HIGH SEAT

**08R70-MKS-E20ZB or E20ZC**

The High Seats increase the seat height by 25mm. Depending on the position selected, the result is a seat height of 875 or 895mm.

Seats are colour matching with the unit:

- Tricolour and Black versions (E20ZB)
- Red versions (E20ZC)



109 €

### COMFORT PILLION STEPS SET

**08R71-MJP-G50**

Deluxe pillion footpegs made of aluminium and rubber. They are wider than the standard pegs and increase comfort.







401 €

### FRONT SIDE PIPE WITH ATTACHMENT

**08ESY-MKS-L2FR**

Providing a strong Adventure look, the Front Side Pipe improve the protection of the body parts of the bike. Made of stainless steel and finished with electrolytic polishing, it is resistant to corrosion and easy to clean. (attachment included)



258 €

### ENGINE GUARD WITH ATTACHMENT

**08ESY-MKS-ENG**

The Engine Guard improves the protection of the engine and the lower part of the bike. Made of stainless steel and finished with electrolytic polishing, it is resistant to corrosion and easy to clean. (attachment included)



214 €

### RADIATOR GRILLS

**08F71-MKS-E00**

Made of stainless steel and displaying a CRF logo, the Radiator Grills increase the African Twin tough image. Their original mesh pattern combines cooling capability with a protection against stone chippings for the radiators.

## PROTECTION

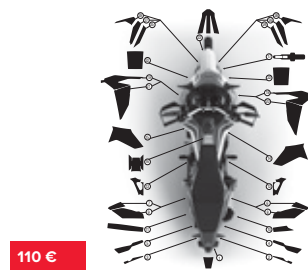


56 €

### SIDE TANK PADS

**08R75-MKS-E20**

Featuring a CRF logo, these reinforced pads are specifically designed to fit the tank sides shape. They protect the paint against scratches and give the rider better control in a stand up position.

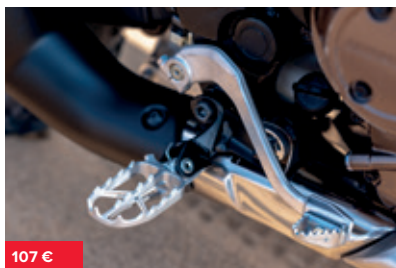


110 €

### PROTECTIVE STICKERS SET

**08ZAR-LOD-004CFSP**

Improve the protection of the body and the engine parts with this set of die-cut stickers.



107 €

### **RALLY STEPS SET** **08R79-MKS-E00**

With their aggressive spike shape and a surface 57% larger than the standard ones, these Rally Steps improve the control during off-road riding.



467 €

### **DCT PEDAL SHIFT** **08U70-MKS-E50**

This kit enables the rider to change gear in the traditional 1 down - 5 up format by using the left foot. It works alongside the handlebar shift triggers giving the rider the choice of using either of them at any moment. (For DCT Version only)



319 €

### **QUICK SHIFTER** **08U70-MLG-E00**

This quick shifter enables quick shift increases and decreases without any clutch operation, thereby reducing the rider burden for long-distance adventure touring.

Has AUTO-BLIP function enabling smooth and instantaneous shift decreases.

(For Manual Transmission version only).

## **PERFORMANCE & DESIGN**



78 €

### **WHEEL STRIPES SET** **08F70-MKS-E20ZE or E20ZD**

Available in 2 colours to match the different versions of the Adventure Sports, these wheels stripes improve the design and add some protection to the rims. Each set includes 2 pieces for each wheel. Recommended application:

- Tricolour versions (E20ZD)
- Black versions (E20ZE)



### **58L TOP BOX STICKERS** **08ZAR-LOD-001GTOP**

Improve the design of your Top Box by adding this exclusive stickers kit for Africa Twin.

Possibility to order the 58L top box with stickers already fitted, as shown in picture (Part number: 08MHF-LOD-001GTOP)



### **PLASTIC PANNIERS STICKERS** **08ZAR-LOD-002GPAN**

Improve the design of your panniers by adding this exclusive stickers kit for Africa Twin.

Possibility to order the panniers with stickers already fitted, as shown in picture (Part number: 08MHF-LOD-002GPAN)





206 €

**MAIN STAND**  
**08M70-MKS-E00**

The Main Stand allows secure parking on a variety of ground surfaces and assists with maintenance operations.







# ACCESSORIES PACKS

	SUPER PACK ALU*	SUPER PACK PLASTIC*	TRAVEL PACK ALU*	TRAVEL PACK PLASTIC*
CONTENT	08HME-MKS-L2FLAL	08HME-MKS-L2FLPL	08HME-MKS-L2TRALU	08HME-MKS-L2TRPL
42-Liter Aluminium Top-Box with base	•		•	
Aluminium Panniers Set with Stay	•		•	
Inner Bag for Aluminium Top Box	•		•	
Aluminium Panniers Inner Bags Set	•		•	
58-Liter Plastic Top Box with back rest and base		•		•
Plastic Panniers Set		•		•
Inner Bag for 58-Liter Top Box		•		•
Inner Bags for Plastic Panniers		•		•
4.5-Liter Tank bag	•	•	•	•
Front LED Fog Lights Kit	•	•		
Deflectors Set	•	•	•	•
Visors Set	•	•	•	•
Radiator Grills	•	•		
Front Side Pipe with attachment	•	•	•	•
Engine Guard with attachment	•	•		
Main Stand	•	•	•	•
<b>PRICES</b>	3 673 €	3 299 €	2 846 €	2 472 €

\* Compatible with DCT or MT versions

*Africa  
Twin*





# ACCESSORIES

## CRF1100L



## AFRICA TWIN

### DID YOU KNOW?

*Africa Twin reaches new heights*

In 2017, the Africa Twin broke the record for the highest altitude reached by a twin-cylinder motorcycle. After 5 days of acclimatisation, a team of 5 riders piloted the Africa Twin onto the slopes of the world's highest active volcano, the Nevado Ojos del Salado - located between Argentina and Chile. Reaching 5,965 metres above sea level, the international team completed its ascent within 24 hours with Africa

Twin specially equipped with Termignoni exhaust, revised final sprockets, new Metzeler MC360TM tyres and a range of Honda genuine accessories. Their route took them - in temperatures as low as minus 5 degrees Celsius - through broken asphalt, gravel, mud, sand and finally stretches of ice pockets known as 'penitentes', underlining once again the Africa Twin's credentials as the best-performing off-road motorcycle in its class.



*Africa  
Twin*



693 €

#### **42-LITER ALUMINIUM TOP-BOX WITH BASE**

##### **08ESY-MKS-LGALU**

Made of strong and light aluminium, this 42L top box can store one full face helmet. It comes equipped in standard with a backrest and the one-key system. Top box base are included.

Maximum load weight: 6 kgs





617 €

### 58-LITER PLASTIC TOP BOX WITH BACK REST AND BASE

**08ESY-MKS-LGPL**

With a large capacity of 58L this plastic top box can store two full face helmets and much more. A special lock allows to secure the lid without using the key. Top box base, backrest and 1-key system are included.

Maximum load weight: 6 kgs



524 €

### EASY 35L TOP BOX PACK

**08ESY-MKS-LG35**

35L Top Box suitable for one helmet. The Honda one key system allows to operate the top box by using the ignition key. Top box base, key system and backrest are included (Rear Carrier sold separately)



138 €

### INNER BAG FOR 58-LITER PLASTIC TOP BOX

**08L81-MKS-E00**

Inner Bag specifically designed to fit the 58L Plastic Top Box. As it is waterproof and equipped with straps, it can be also attached directly onto the motorcycle. Finally, a shoulder strap makes it easy to carry.

## LUGGAGE



1 468 €

### ALUMINIUM PANNIERS SET

**08ESY-MKS-PNALU**

Made of strong and light aluminium, this set includes 2 panniers presenting a capacity of 33 L on the right side and 37 L on the left.

An aluminium stay and a set of 1-key Honda systems are included to fit directly the standard rear carrier of the Africa Twin.

Maximum load weight for each pannier: 10 kgs



1 153 €

### PLASTIC PANNIERS SET

**08L71-MKS-E00**

Specifically designed for a stay-less installation, this set of 2 panniers are suitable for adventure touring thanks to their highly durable shell. On the right side, the pannier presents a capacity of 30 litres. With 40 litres of capacity on the left side, it's possible to store one full-face helmet. Both panniers are equipped with a security lock and the Honda 1-Key system.

Maximum load capacity per panniers: 6 kg



71 €

### INNER BAG FOR PLASTIC PANNIER

**08L83-MKS-E00**

Specifically designed to fit the right or the left plastic pannier. Same specifications as the plastic top box inner bag.



66 €

### INNER BAG FOR 35-L TOP BOX

**08L75-MJP-G51**

Black nylon bag with embroidered silver Honda wing logo on the top and red zippers. Comes with adjustable shoulder belt and carrying handle.



136 €

### 4.5-LITER TANK BAG

**08L85-MKS-E00**

With 4.5 liters of capacity, this waterproof Tank Bag is convenient to store the most essential items. Its look-through pocket on the top allows to store a map. Combining a one-touch buckle and magnet, this tank bag is easy to attach or remove.

Maximum load weight: 1.5 kg



97 €

### 3-LITER TANK BAG

**08L89-MKS-E00**

This 3 Liters Tank Bag features a transparent pocket and it's ideal to store small personal items. Unnoticeable while steering the bike, this Tank Bag is firmly attached thanks to a one-touch buckle and a magnet. A rain cover is included.

Maximum load weight: 1.5 kg

## LUGGAGE



### 58L TOP BOX STICKERS

**08ZAR-LOD-001GTOP**

Improve the design of your Top Box by adding this exclusive stickers kit for Africa Twin. Possibility to order the 58L top box with stickers already fitted, as shown in picture (Part number: 08MHF-LOD-001GTOP)



### PLASTIC PANNIERS STICKERS

**08ZAR-LOD-002GPAN**

Improve the design of your panniers by adding this exclusive stickers kit for Africa Twin. Possibility to order the panniers with stickers already fitted, as shown in picture (Part number: 08MHF-LOD-002GPAN)





400 €

### FRONT SIDE PIPE WITH ATTACHMENT

**08ESY-MKS-L1FR**

Providing a strong Adventure look, the Front Side Pipe improves the protection of the body parts of the bike. Made of stainless steel and finished with electrolytic polishing, it is resistant to corrosion and easy to clean. It can be used to mount the Front LED Fog Lights (sold separately).



259 €

### ENGINE GUARD WITH ATTACHMENT

**08ESY-MKS-ENG**

The Engine Guard improves the protection of the engine and the lower part of the bike. Made of stainless steel and finished with electrolytic polishing, it is resistant to corrosion and easy to clean. (Attachment included)



214 €

### RADIATOR GRILLS

**08F71-MKS-E00**

Made of stainless steel and displaying a CRF logo, the Radiator Grills increase the African Twin tough image. Their original mesh pattern combines cooling capability with a protection against stone chippings for the radiators.

## PROTECTION



47 €

### SIDE TANK PADS

**08R81-MKS-E00**

These reinforced side pads are specifically designed to fit the tank shape. They protect the paint against scratches and give a better control for the rider in a stand-up position.



29 €

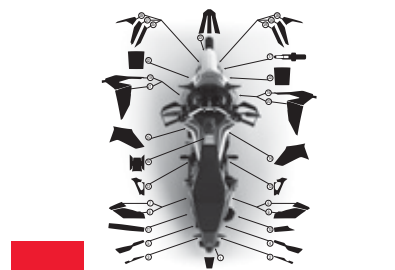
### KNUCKLE GUARDS EXTENSION

**08P72-MKS-E00ZC OR E00ZD**

These Knuckle Guard Extensions improve the comfort and the protection of the hands.

Applications recommended:

- Tricolor or Black model: E00ZC
- Red model: E00ZD



### PROTECTIVE STICKERS SET

**08ZAR-LOD-003CFSP**

Improve the protection of the body and the engine parts with this set of die-cut stickers.



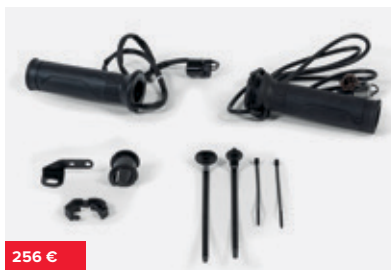
# COMFORT



493 €

## FRONT LED FOG LIGHTS KIT 08ESY-MKS-FL20

Set of 2 additional LED headlights (11W) with all necessary components for fitment to the front side pipe (not included). Increase the visibility for the riders and make them more noticeable for the surrounding traffic. Operated directly with the handlebar switch and signalled on the TFT monitor when activated.



256 €

## GRIP HEATERS WITH ATTACHMENT 08T72-MKS-E01

The 5 temperature levels of these slim heated grips are displayed on the TFT monitor. When the ignition is switched off, the last position is memorized. An integrated circuit protects the battery from draining.



25 €

## 12V SOCKET 08U70-MKS-E00

Installed on the control panel, this 12V Socket is ideal to power or charge electrical equipment.





### HIGH WINDSCREEN

**08R76-MKS-E00**

Taller than the standard screen by 175 mm, this High Wind Screen improves the rider's comfort by reducing the airflow around the head and the arms. It replaces directly the standard windscreen and comes with a meter visor.



### VISORS SET

**08R78-MKS-E00**

The visors improve the rider's comfort by reducing the pressure of the airflow around the arms and the shoulders.



### DEFLECTORS SET

**08R72-MKS-E00**

The deflectors improve comfort by reducing travelling air around the rider's waist and knees while funnelling the warm air emitted by the radiators.



### LOW SEAT

**08R73-MKS-E00ZA, ZB or ZC**

The Low Seat reduces the seat height by 25mm. Depending on the position selected on the motorcycle, the result is a seat height of 825 or 845mm.

Applications recommended:

- Red model: E00ZA
- Tricolor model: E00ZB
- Black model: E00ZC



### HIGH SEAT

**08R70-MKS-E20ZB or E20ZC**

The High Seat increases the seat height by 25mm. Depending on the position selected on the motorcycle, the result is a seat height of 875 or 895mm.

Applications recommended:

- Black model: E20ZB
- Red model: E20ZC



### COMFORT PILLION STEPS SET

**08R71-MJP-G50**

Deluxe pillion footpegs made of aluminium and rubber. They are wider than the standard pegs and increase comfort.



### **RALLY STEPS SET**

**08R79-MKS-E00**

With their aggressive spike shape and a surface 57% larger than the standard ones, these Rally Steps improve the control during off-road riding.



### **DCT PEDAL SHIFT**

**08U70-MKS-E50**

This kit enables the rider to change gear in the traditional 1 down - 5 up format by using the left foot. It works alongside the handlebar shift triggers giving the rider the choice of using either at any point.

(For DCT Version only).



### **QUICK SHIFTER**

**08U70-MLG-E00**

The quick shifter enables the rider to change gear without operating the clutch lever or shutting off the gas.

The system works for upshifting and downshifting, maximizing the riding experience.

(For Manual Transmission version only).

## **PERFORMANCE & DESIGN**



### **SMOKE WINDSCREEN**

**08R70-MKS-E00**

Add some toughness to the front end style of your Africa Twin with this smoke wind screen that replaces directly the standard one (same shape).



### **WHEEL STRIPES SET**

**08F70-MKS-E00ZD or E40ZA**

These Wheel Stripes improves the design and add some protection to the rims. Each set includes 2 pieces for each wheel. Recommended application:

- For Red or Black versions: E00ZD
- For Tricolor version: E40ZA





206 €

**MAIN STAND**  
**08M70-MKS-E00**

The Main Stand allows secure parking on a variety of ground surfaces and assists with maintenance operations.



*Africa  
Twin*





# ACCESSORIES PACKS

	OFF-ROAD DCT	OFF-ROAD MT	SUPER PACK ALU	SUPER PACK PLASTIC	ELECTRIC	TRAVEL PACK ALU	TRAVEL PACK PLASTIC
CONTENT	See below for the Part Numbers		08HME-MKS-L1ALU22	08HME-MKS-L1PL22	08HME-MKS-EL20	08HME-MKS-L1TRA22	08HME-MKS-L1PLTP
Radiator Grills	•	•					
Side Tank pads	•	•					
Front Side Pipe with attachment	•	•	•	•		•	•
Engine Guard with attachment	•	•					
Rally Steps Set	•	•					
DCT Pedal Shift	•						
Quick Shifter		•					
Smoke Wind Screen	•	•					
"Wheel Stripes set (In matching colours)"	•	•					
"Knuckle Guards (In matching colours)"	•	•					
42L Aluminium Top Box with Base			•			•	•
Aluminium Panniers set with Stay			•			•	
Inner Bag for Aluminium Top Box			•			•	
Aluminium Panniers Inner Bags set			•			•	
58L Plastic Top Box with Backrest and Base				•			•
Plastic Panniers set				•			•
Inner Bag for 58L Top Box				•			•
Inner Bag for Plastic Panniers				•			•
4,5L Tank Bag			•	•		•	•
Front LED Fog Lights with attachment			•	•	•		
Grip Heaters with attachment			•	•	•		
12V Socket			•	•	•		
High Wind Screen			•	•			
Deflectors set			•	•			
Visor set			•	•			
Main Stand			•	•		•	•
Red Versions	08HME-MKS-L1RDCT	08HME-MKS-L1R22					
Black Versions	08HME-MKS-L1BDCT	08HME-MKS-L1B22					
Tricolor Versions	08HME-MKS-L1TDCT	08HME-MKS-L1T22					
PRICES	1 481 € 1 476 €				697 €		

# NC750X





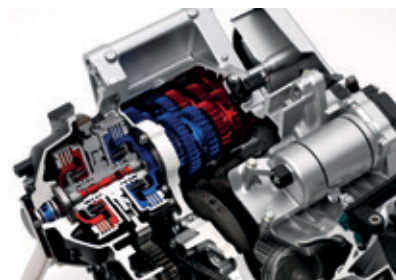
# ACCESSORIES

## NC750X



*Do you really need a left lever to enjoy riding?*

The Dual Clutch Transmission made its worldwide debuts for motorbikes in 2010 with the Honda VFR 1200. Now entering its 3<sup>rd</sup> generation and downsized to suit mid-displacement bikes, the DCT is completely different from the belt-type transmissions used by most scooters: it is structurally a conventional 6-speed gear ratio transmission, yet electronically controlled when changing speeds. Keep the fun of a manual transmission; enjoy the comfort of an automatic one!



NC750X





421 €

### 50L MANUAL TOP BOX

**08L73-MKT-D00**

50L Top Box that can hold two helmets in. The built-in key cylinder can be used to lock the top box even when is removed from the carrier. Must be mounted with the rear carrier and the Top Box Rubber Pad (sold separately)

Maximum load capacity: 6 kg



71 €

### ALUMINIUM TOP BOX PANEL

**08L83-MKT-D00**

Give your 50L Top Box a classy touch with this Aluminium design panel (top box sold separately).



412 €

### REAR CARRIER \*NHC08M\*

**08L70-MKW-D00ZB**

The Rear Carrier is needed to fit all the Honda Genuine Luggage specifically designed for NC750X. 2 handles have been integrated to improve the passenger comfort and ease the handling of the bike.

Maximum load capacity: 10 kg

## LUGGAGE



71 €

### 50L TOP BOX RUBBER PAD

**08L85-MKT-D00**

Designed to match the 50L Top Box, this backrest is made for passenger comfort. Easy fitment with no drilling required.



138 €

### INNER BAG FOR 50-LITRE TOP BOX

**08L81-MKS-E00**

Made of a robust fabric, this waterproof inner bag comes with 2 shoulder belts and a carrying handle. Presenting reflective signage and a Honda Logo, this large inner bag can be strapped directly on your bike if need be.

See also page 31 for the 25-Litre Inner Bag.



366 €

### 35L TOP BOX WITH KEY SYSTEM

**08ESY-MKT-TB35OK**

35L Top Box suitable for one helmet. The Honda one key system included allows operating the top box by using the ignition key.

Maximum load capacity: 6 kg

Rear Carrier sold separately.





1 234 €

### PANNIERS SET WITH STAY

**08ESY-MKW-PNA**

Set of 2 panniers matching the NC750X body design. The "Honda one key system" included allows to open and close the panniers by using the key of the motorcycle. The stay available with this kit allows fitting the panniers on the rear carrier (sold separately).



120 €

### ALUMINIUM PANELS FOR PANNIERS

**08L80-MKT-D00**

Give your panniers a premium touch with this set of aluminium design panels. (Panniers sold separately).



143 €

### PANNIERS INNER BAGS SET

**08L78-MKT-D00**

Set of 2 inner bags matching the shape of the new panniers design. Available in black with a discrete Honda signature, these inner bags come with a shoulder strap for easy carry.

## LUGGAGE



66 €

### 35L TOP BOX INNER BAG

**08L75-MJP-G51**

Black nylon bag with embroidered silver Honda wing logo on the top, with red zippers. Expandable from 15 to 25L. Comes with adjustable shoulder belt and carrying handles.



110 €

### TOP BOX BACKREST

**08F00-MJP-G50**

Designed to match the 35L Top Box, this backrest improves passenger comfort. Easy fitment with no drilling required. (Top Box sold separately).



157 €

### HIGH WIND SCREEN

**08R70-MKW-D00**

The High Wind Screen is 77mm higher than the standard one and reduces the air pressure felt by the rider around his head and arms. Made of strong clear polycarbonate, it can be mounted directly in replacement of the standard screen.



366 €

### HEATED GRIPS

**08T70-MKW-D00**

Extremely slim heated grips with smart heat allocation and a 5-level controller for maximum comfort. An integrated circuit protects the battery from draining. The last level selected is memorized when the bike's ignition is switched off.



88 €

### FOOT DEFLECTOR SET (DCT)

**08R70-MKW-D10**

This set of deflector improves comfort by reducing the air pressure felt by the rider and limit water projections. Exist also for MT version (08R71-MKW-D00)

## COMFORT



234 €

### FRONT SIDE PIPE

**08P71-MKW-D00**

The Front Side Pipes reduces damage to exterior parts in case of contact and give your NC750X its tough Adventure look. They are needed to fit the Front Fog Lights (sold separately).



593 €

### FRONT LED FOG LIGHTS WITH ATTACHMENTS

**08ESY-MKW-FL21**

These 2 additional headlights will increase your visibility and make you more noticeable for the surrounding traffic.

Must be mounted with the Front Side Pipes (sold separately).



40 €

### USB CHARGER

**08E73-MKW-D00**

Conveniently located in the luggage compartment, this Type-C USB charger provides 15W and allows you to power your electronic devices.



95 €

**MAIN STAND**  
**08M70-MKW-D00**

Facilitates cleaning, rear-wheel maintenance, and more secure parking.



120 €

**U-LOCK 123/217**  
**08M53-MEE-800**

U-Lock with tamper-resistant barrel key.

# SECURITY & MAINTENANCE



**NC750X**



# ACCESSORIES PACKS

PACKS	TRAVEL	URBAN	ADVENTURE	
			DCT	MT
CONTENT	08HME-MKW-TR21	08HME-MKW-URB	08HME-MKW-ADTDCT	08HME-MKW-ADTMT
50L Top Box with Key system	•	•		
Aluminium Panel for Top Box	•	•		
Back Rest for Top Box	•	•		
Panniers Set with Key Systems	•			
Aluminium Panels for Panniers	•			
Panniers Stay	•			
Rear Carrier	•	•		
High Wind Screen	•	•		
Grip Heaters			•	•
Front Led Fog Lights			•	•
Front Side Pipe			•	•
USB Charger			•	•
Foot Deflectors (DCT)			•	
Foot Deflectors (MT)				•
Main Stand	•	•		
PRICES	2 345 €	1 126 €	1 205 €	1 203 €

**500X**





# ACCESSORIES

## CB500X



### DID YOU KNOW?

*ProLink: from motocross to MotoGP race tracks*

Brought for the first time to the Motocross enthusiasts in 1981, the rear mono shock system patented by Honda is applied on many production models such as the CB500X, but also on the RC213V racing in MotoGP.



**500X**



235 €

### **REAR CARRIER**

**08L71-MGZ-D80ZA**

Sturdy rear carrier with integrated pillion grabs rails.  
Not compatible with the panniers stay.





**35L TOP BOX**  
**08ESY-MJX-TBWK**

35-liters Top Box designed to be operated with your CB500X key. This set includes the rear carrier and the base needed to mount the top box on the bike. The key system is also included.



**PLASTIC PANNIERS SET**  
**08L70-MGZ-D80**

Set of two aerodynamically shaped panniers especially fully integrated with the design of the CB500X. Stay and key system sold separately.



**FULL LUGGAGE KIT**  
**08ESY-MKP-FL21**

Equip your CB500X for the long haul travel with this kit including the 35L Top Box, the panniers with their design pannels, the key cylinders and the mounting system.

## LUGGAGE



**TOP BOX INNER BAG (35L)**  
**08L09-MGS-D30**

Black nylon bag with silver Honda wing logo on front pocket. Expandable from 15 to 25l. The front pocket can contain an A4-size file. Comes with adjustable shoulder belt and carrying handle.



**TANK BAG**  
**08ESY-MKP-TKB19B**

Small bag specially designed to fit the CB500X tank. The bag has 2 magnetic flaps and 2 removable straps. The kit includes 2 sets of screw pan, collar and plain washer and 2 adhesive protective films to protect the tank against scratches. Volume: 3 litres.



**REAR SEAT BAG WITH ATTACHMENT**  
**08ESY-MKP-SEAT**

A simple and functional rear bag specifically adapted to the tapered shape of the rear seat. Easy attachment and stable mounting thanks to the attachment provided. Capacity of 15 litres that can be expanded to 22 litres. Rain cover included.



### FRONT LED FOG LIGHTS

**08ESY-MKP-FOG19**

Set of 2 additional front LED headlights with all necessary components for fitment to the front side pipe also included in this set. Increase the visibility for the rider and make him more noticeable for the traffic surrounding him.



### GRIP HEATERS SET

**08ESYMKPGHX22**

Slim heated grips with integrated control unit providing 360° heat around the grips. Features 3-step variable heating levels and an integrated circuit to protect the battery from draining. Attachment and special heat-resistant cement included.



### 12V SOCKET

**08U70-MKP-D80**

12V Power Socket allows you to power or charge electrical equipment directly from the bike.

## COMFORT



### KNUCLE GUARDS

**08P70-MKP-DQ0**

This pair of knuckle guards will deflect wind & rain away from the riders hands and increase his comfort. They also achieve to give your CB500X the ultimate Adventure look.



### SMOKE WIND SCREEN

**08R70-MKP-J80**

Smoked windscreen for improved comfort and a sporty look. Size and shape are identical to the standard clear wind screen.



### DEFLECTOR KIT

**08R71-MKP-J80**

Set of black left and right deflectors to protect legs from wind.



# PROTECTION



**FRONT SIDE PIPE**  
08P72-MKP-J80ZA

Improve the protection and gives a mounting for the fog lights (sold separately)



**TANK PAD**  
08P70-MGH-J20

Helps to protect the tank from scratches.





*500X*



### MAIN STAND KIT

08M70-MKP-J80

Facilitates cleaning and rear wheel maintenance, plus allows for more secure parking on uneven surfaces.



### OUTDOOR CYCLE COVER XL

08P34-BC2-801

Protects paintwork against U.V. rays. Water-resistant breathable fabric that allows the bike to dry while covered. Rope to tighten the cover to avoid fluttering. Two holes in front lower area for easy introduction of U-lock. Not suitable for bikes with top box and/or panniers installed.

## MAINTENANCE

## ACCESSORIES PACK

COMFORT	
CONTENT	08HME-MKP-CX22
Knuckle Guards	•
Deflectors	•
Grip Heaters	•
12V Accessory Socket	•
Main Stand	•
PRICES	783 €



# CRF

300 RALLY





# ACCESSORIES

## CRF 300 L / RALLY



*You've got the look and a bit more*

*When you see the images of the Honda riders racing for victory in the Dakar Rally, it is easy to spot the direct lineage between their CRF450 Rally and your CRF 300.*

*It is not only a matter of appearance but the ultimate proof that what is developed during the toughest races, can benefit everybody.*



**CRF**  
300 RALLY







### **35L TOP BOX WITH REAR CARRIER**

**08ESY-K1T-TB38**

35L Top Box suitable for one helmet. The Honda one key system allows operating the top box by using the ignition key. Top box base, key system and rear carrier are included.



66 €

### **35L TOP BOX INNER BAG**

**08L75-MJP-G51**

Black nylon bag with embroidered silver Honda wing logo on the top, with red zippers. Expandable from 15 to 25L. Comes with an adjustable shoulder belt and carrying handles.



167 €

### **SKID PLATE**

**08P70-K1T-E50**

Made of 4mm thick aluminium, the Skid Plate improves the protection of the engine and the lower part of the bike. It is resistant to corrosion and easy to clean.

(Only applicable on CRF300L)





The specific details of this brochure do not apply to any particular product supplied or offered for sale. Manufacturers reserve the right to vary specifications, including colours, with or without notice at such times in such manner as deemed appropriate. Major as well as minor changes may be involved. Every effort, however, is made to ensure the accuracy of the particulars contained in this brochure. Consult your Dealer for details regarding the specifications of any featured product. This publication shall not constitute - under any circumstances whatsoever - an offer by the Company to any individual. All sales are made by the Distributor or Dealer subject to and with the benefit of the standard Conditions of Sale and Warranty provided by the Distributor or Dealer, copies of which may be obtained upon request. While efforts are made to ensure specification accuracy, brochures are prepared and printed several months in advance of distribution and consequently cannot always immediately reflect either changes in specification or in some isolated cases the provision of a particular feature. Customers are always advised to discuss specific details with the supplying Dealer, especially if a selection is dependent upon one of the features advertised. Please contact your local dealer for information and specifications. Please note that the fuel consumption figures provided are results obtained by Honda under standardised testing conditions prescribed by WMTC. Tests are conducted on a rolling road using a standard version of the vehicle with only one rider and no additional optional equipment. Actual fuel consumption may vary depending on how you ride, how you maintain your vehicle, weather, road conditions, tyre pressure, installation of accessories, cargo, rider and passenger weight, and other factors. You accept that if you do go ahead and make a purchase or enter into any kind of transaction, whether for payment or not, you did so entirely in reliance on your own skill and judgement and not on that of anyone else.

**RIDE WITH STYLE** Read the owner's manual thoroughly. Get to know your machine and its capabilities. Concentration assists anticipation. Observe other road users' movements. Brake in plenty of time. Always wear a helmet and quality kit, ride fit and NEVER after drinking alcohol. Good roadcraft and courtesy identify the skilled and stylish rider. Honda endorse the law that all helmet visors must comply with BS 4110. Visors that transmit less than 50% of visible light cannot legally be used on the road.

**Honda Motor Europe - Motorcycles**

**HONDABIKE.SI**



Please don't bin me.  
Pass me on to a  
friend or recycle me.

Honda Motor Europe sources  
paper responsibly from  
manufacturers within the EU.



**BLUE SKIES FOR  
OUR CHILDREN**